

Ejercicios Rítmicos

J. Arribas

The first ten staves of the page are rhythmic exercises in 2/4 time. Each staff begins with a treble clef and a 2/4 time signature. The exercises consist of eighth and sixteenth notes, often beamed together, with various rests. Some staves include a key signature change to one sharp (F#) in the middle. The final staff of this section ends with a double bar line and a 6/8 time signature.

Bellow Shake:

The 'Bellow Shake' section consists of two staves in 2/4 time. The first staff starts with a treble clef and a 2/4 time signature. It features a series of chords, primarily triads and dyads, with rhythmic patterns indicated by square notes and stems. Above the first few notes, there are square symbols (□) and 'V' symbols, likely representing specific techniques or accents. The second staff continues with similar chordal and rhythmic patterns, also in 2/4 time.

Patrones rítmicos.

Vals / Jota / Fandango (cambia el aire)



seguidilla

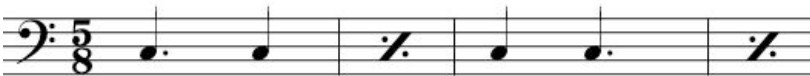


jiga /danzantes



entradilla

variantes del 8/8:



petenera



Ejercicios Mano Derecha (rebatido)

Jorge Arribas

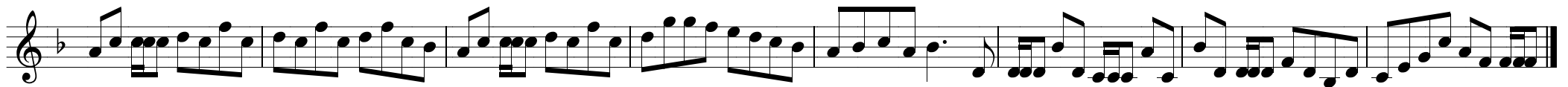
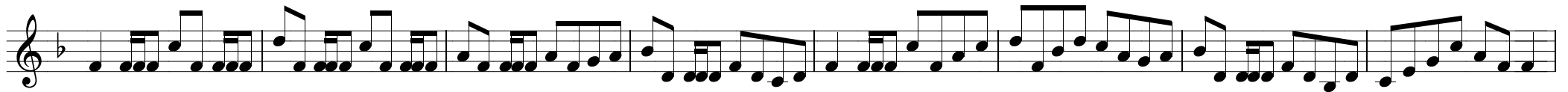
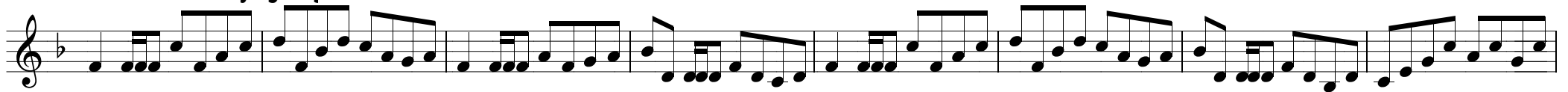




Music for a found harmonium



Martin O'Connor's Flying Cloak



Ejercicios para Tarantella

Jorge Arribas

5 5 4 5 5 1 5 1 4 2 3 1

Dm Gm Dm Dm Gm Dm

5 1 5 1 4 3 2 4 3 2 3 1 5 1 5 1 2 3 4 3 1

Dm Gm Dm Dm Gm Dm

5 1 3 1 4 2 3 1

Dm Gm Dm Dm Gm Dm




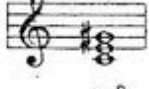
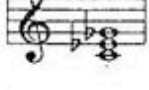
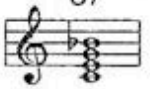
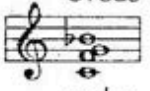

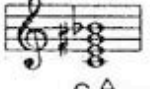


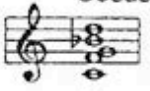

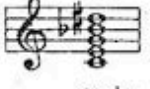




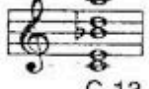
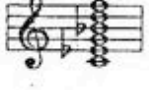

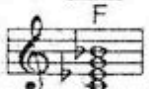

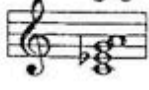

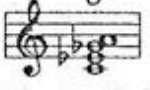

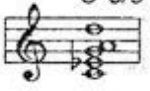
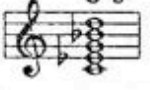

Cifrado americano: **A B C D E F G** sharp.- #
 la si do re mi fa sol flat.- b



* mayor	Maj	Ma	M	Δ
* menor	-	mi	m	min
aumentado	+	aug	Au	Aug
* disminuido	o	dim	di	°7
semidisminuido	ø	°7	m7 ^{b5}	

Con los acordes preparados de la mano izquierda, tengo los M, m, 7 y dism pulsando un solo botón.

Cifrados de los distintos tipos de acorde:

TRIADAS	7 ^a	9 ^a	11 ^a
<p>C  Cma¹ C Ma C triad</p> <p>C-  Cm Cmi</p> <p>C sus  C sus4 C4</p> <p>C+  C+5 C aug C#5</p> <p>C°  C-(b5) C dim C dim triad</p>	<p>C7  C7sus4 C7/4</p> <p>C7sus  C7sus4 C7/4</p> <p>C7b5  C7(-5)</p> <p>C7+5  C+7 C7#5</p> <p>C-Δ  CΔ7 Cmaj7 CMa7</p>	<p>C6/9  C⁶₉</p> <p>C9sus  C9sus4 G-7 C</p> <p>C9  C7/9</p> <p>C7+9  C+9 C7#9</p> <p>C7b9  C7(-9) Cb9</p> <p>C7b9  C⁹₅</p>	<p>C9+11  C+11</p> <p>C-11  Cm9/11</p>
			13^a
			<p>C13  C9/13</p> <p>C-13  Cm9/13</p>
			Nota agregada
			<p>C-7 add A  Cm7 (add 13)</p>
			Bajo cambiado
			<p>C-7 / F  Cm7/F</p>
6^a			
<p>C6  Cma6</p> <p>C-6  Cm6 Cmi6</p>	<p>C-Δ  C-maj7 CmΔ7</p> <p>C°  C°7 C dim</p> <p>C°  C°7 Cm7b5 C°7</p>	<p>C-6/9  Cm6/9</p> <p>C-9  C-7/9 Cm9</p> <p>C-Δ9  Cm maj7/9 Cm maj9</p>	

Petit Vals
(cifrado)

Jorge Arribas

I I IV IV I I V V I I IV IV V V I
IV IV I I V V I I ://

5

Am⁹ Dm⁹

9

Am⁹ E7(b⁹)

13

Am⁹ Dm⁹

17

E⁷ Am

21

Dm⁷ Am⁷

25

E7(b⁹) Am⁷ Am

Petit Vals

Jorge Arribas

1 2 3 3 2 1 4 1 2 3 3 2 1 2

Am Dm Am E

Detailed description: This system contains the first six measures of the piece. The music is in 3/4 time. The right hand (treble clef) plays a melody with fingerings indicated above the notes. The left hand (bass clef) provides a harmonic accompaniment with chords labeled Am, Dm, Am, and E. A slur covers the first two notes of the second measure in both hands.

9 1 2 3 3 2 1 4 3 4 5 4 3 2 1 2 1

Am Dm E7 Am

Detailed description: This system contains measures 7 through 12. The right hand melody continues with fingerings. The left hand accompaniment includes chords Am, Dm, E7, and Am. A slur covers the first two notes of the eighth measure. The system ends with a double bar line and repeat dots.

17 2 4 3 2 3 4 3 2 3 1 2 3 2 1 2 4 3 2 1 3 2 1 2 1

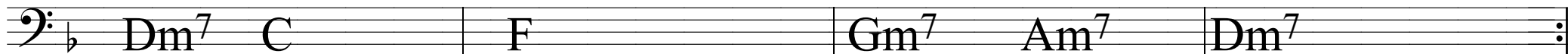
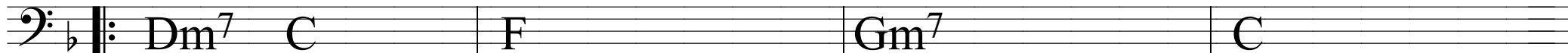
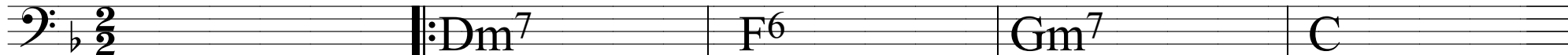
Dm Am E Am Am

Detailed description: This system contains measures 13 through 18. The right hand melody features a key signature change to one sharp (F#) in measure 14. The left hand accompaniment includes chords Dm, Am, E, and Am. A slur covers the first two notes of the 17th measure. The system ends with a double bar line and repeat dots.

An Dro

(cifrado)

Trad. Bretaña
Transc. J.Arribas



An Dro

Trad. Breñaña
Trans. J. Arribas

1 2 3 2 | 1 5 3 1 | 2 5 4 5 4 3 | 2 1 3 1 3 2 | 1 2 3 2

Dm F Gm C

2 5 3 4

Detailed description: This system contains the first four measures of the piece. The treble clef staff has a key signature of one flat (B-flat) and a 3/4 time signature. Fingerings are indicated by numbers 1-5 above the notes. Chords are labeled as Dm, F, Gm, and C. The bass clef staff shows the bass line with fingerings 2, 5, 3, and 4.

1 5 3 1 | 2 5 4 5 4 2 | 3 1 2 3 1 3 1 | 1. 2 1 2 3 2 | 2. 2 1 2 1 2

Dm F Gm Am Dm Dm

2 5 3 - 2 3 3

Detailed description: This system contains measures 5-10. It includes a first ending (1.) and a second ending (2.). Chords are Dm, F, Gm, Am, and Dm. Fingerings are shown above the notes. The bass line has fingerings 2, 5, 3, a rest, 2, 3, and 3.

3 3 2 5 | 3 1 1 2 3 5 | 4 5 4 5 4 3 | 2 1 2 1 2

Dm C F Gm C

2 4 5 3 4

Detailed description: This system contains measures 11-16. It starts with a repeat sign. Chords are Dm, C, F, Gm, and C. Fingerings are shown above the notes. The bass line has fingerings 2, 4, 5, 3, and 4.

3 3 2 5 | 3 1 1 2 3 5 | 4 2 3 1 3 1 | 1. 2 1 2 1 2 | 2. 1 1 2 3 2

Dm F Gm Am Dm Dm

2 4 5 3 - 2 3 3

Detailed description: This system contains measures 17-22. It includes a first ending (1.) and a second ending (2.). Chords are Dm, F, Gm, Am, and Dm. Fingerings are shown above the notes. The bass line has fingerings 2, 4, 5, a rest, 2, 3, and 3.